

# Road Closures & Restrictions Map Help File

The MCDOT Road Closures and Restrictions Map is interactive and provides the viewer with several options.

## Heading & Main Menu

The screenshot shows the MCDOT Road Closures and Restrictions Map interface. On the left, there is a 'Tools' panel with the following options:

- Scalebar: ON
- Measure: OFF
- When the measure tool is on: Popup windows are disabled.
- Layers: (empty)
- Aerial Imagery: OFF
- Legend: (expanded)

The Legend includes the following items:

- Future Maricopa County Closure or Restriction (pink line)
- Future Peoria Closure or Restriction (light green line)
- Road Closure Maricopa County (dark red line)
- Road Closure Peoria (dark green line)
- Road Restriction Maricopa County (red line)
- Road Restriction Peoria (green line)
- Flood Water (blue line)

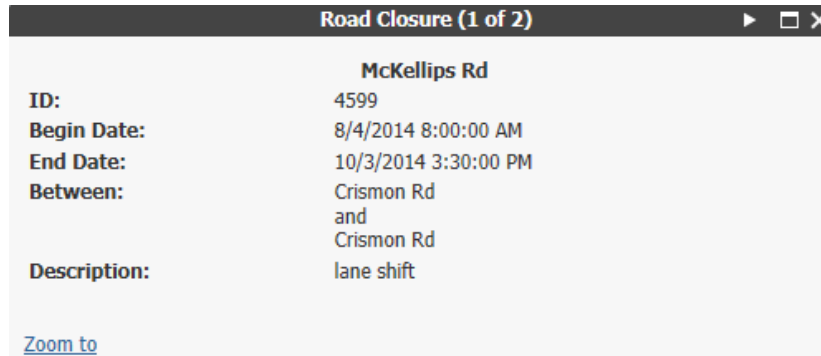
The main map area is labeled 'Interactive Map' and shows a road network with various colored markers. Below the map is a table titled 'Road Closures & Restrictions List'.

| ID   | Category     | On           | From     | To          | Begin Date        | End Date           | Description   |
|------|--------------|--------------|----------|-------------|-------------------|--------------------|---|
| 4369 | Restrictions | Gilbert Rd   | Wood Dr  | Ocotillo Rd | 4/29/2014 1:30 AM | 12/31/2014 8:30 AM | lane shift  |
| 4513 | Restrictions | Northern Ave | 91st Ave | 89th Ave    | 8/8/2014 5:00 PM  | 2/1/2015 5:00 AM   | Action Barricade is doing traffic control for various special |

## Road Closures & Restrictions List

### Map View

Each road closure or restriction is represented on the map by a dot, square, or line. A legend explaining what each color represents is located on the left hand side of the screen. To view the details of a particular restriction, place your mouse over the dot and single click. A detail window will appear and provide specific data related to that road condition.



Click on the Zoom to link and the map will resize to give you a closer view of the area affected. Continue clicking on the Zoom to until you reach the closest level of detail you would like to observe. To go back to a previous zoom level, click on the Prev Extent button located at the top of the screen. As you zoom in on a particular location, the road closure list that appears at the bottom of the screen is filtered to display just those road closures and restrictions related to the area you are zooming into. To close the detail window click on the X in the upper right-hand corner. To return to the default view, click on the House icon located at the top left hand side of the map.

### Zooming In and Out

In addition to using the Zoom to link in the detail screen to zoom in on a specific location, there are several other ways to zoom in and out on the map. The easiest way is to click on the + and - signs in the upper left-hand corner. Another way is to click on the map and then move the roller wheel on your mouse up and down to zoom in and out. Lastly, you can also double-click on the map to zoom in. Clicking on the Home icon within the map will return the map to its default size.

### List View

To view a List of Road Closures and Restrictions that are depicted on the interactive map you may scroll through the list located at the bottom of the screen. You may also rearrange the list by clicking on any one of the headings. For example to sort the list by the On Road Name, click on the On heading. The first click will sort the list by the On Road in ascending order. Click the heading again and the list will be resorted in descending order.

### Tools

By default, the Tools area is turned on and displayed on the left-hand side of the screen. The Tools pane contains the Scalebar, the Measuring Tool, the Layers options, the Aerial Imagery option, and the Legend. To view a larger portion of the interactive map, you may remove the Tools area from the screen by clicking on the Close button located at the top of the screen.



To toggle the Tools area back on, click on the wrench/tools icon located above the map on the right-hand side. This button not only toggles the Tools area on, it toggles it off as well.



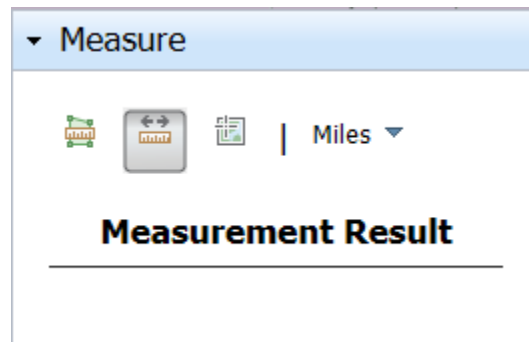
## Scalebar

The Scalebar option turns the map scale shown on the bottom left-hand corner of the map on and off. By default the scalebar is turned on and based on the zoom level, will display the scale of the map.



## Measure

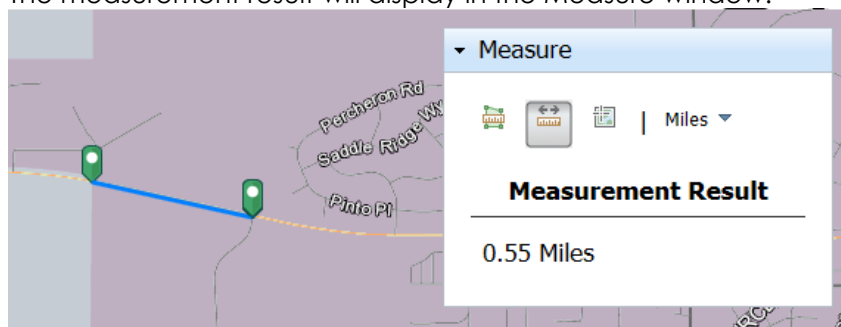
The Measure tool provides a method in which you can measure an area, a distance, or a location on the map. To activate this feature click on or slide the Measure bar to turn on. A Measure pop-up window with three options Area, Distance, and Location will appear. Once you select an option, the Unit of Measure option will display on the screen. You may also select the unit of measure based on what option you selected.



The Area button allows you to measure a specific area on the map.



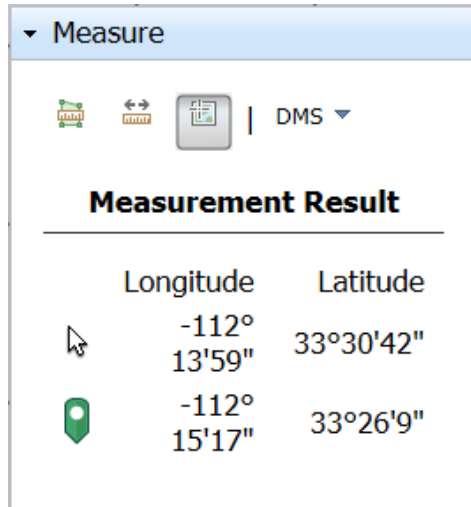
To measure the Distance from one point to another, click on the Distance option. Select the unit of measure from the options displayed and then click on the starting point. Drag the cursor to the ending point and double-click. The measurement result will display in the Measure window.



To turn off this feature, click on the Distance icon.



Location. Clicking on the Location icon in the Measure window will display the location of where your cursor is positioned on the map. The measurement is displayed in Degrees or the DMS.



## Layers

Under Construction. The Layers tool provides you with the ability to add and observe different layers on the map.

## Aerial Imagery

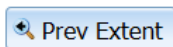
Aerial Imagery is turned off by default. To view the most recent aerial images of an area, click or slide the bar to ON, then click on the map in the area you wish to view the aerial. To turn off the aerals, click or slide the bar to OFF.

## Legend

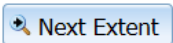
The map Legend describes the types of road closures and restrictions that are depicted on the map. This feature cannot be turned off.

## Main Menu

The Main Menu contains six options. Previous Extent, Next Extent, Search/Locate, Tools, Road Closure Report, and this Help file.



If you have zoomed in on the interactive map, clicking on the Previous Extent button will resize the map to the previous viewed size.



If you have zoomed in on the interactive map multiple times and have clicked on the Prev Extent button, clicking on the Next Extent button will resize the map one click larger.



Clicking on the Search button will display a Location menu in place of the Tools menu. The Location menu will assist you in locating properties by address, owner, or parcel number as well as finding the locations of intersections, GPS coordinates or Township and Ranges. The result of your search will be marked by a point or by lines. These temporary graphics can be removed using the Clear Search Graphics option. You may remove the Location menu the same way that the Tools menu is removed, by clicking on the Red X.

## Location



**Address/Street Intersection** >

---

### GPS

Find your current location on the map

---

**Property Owner** >

---

### APN

Assessor Parcel Number

---

**Township/Range/Section** >

---

**Clear Search Graphics**

---



The Tools icon toggles the Tools pane off and on.



Road Closure Report. Click on this icon to view a list of the current and future Maricopa County road closures and restrictions. Users may sort this list by clicking on any heading. The first click will sort the list in ascending order by the column heading you selected. A second click on the same heading will sort the list in descending order. To print this report, right-click while viewing the report on the screen, select Print. Following the remaining print options to complete the printing.

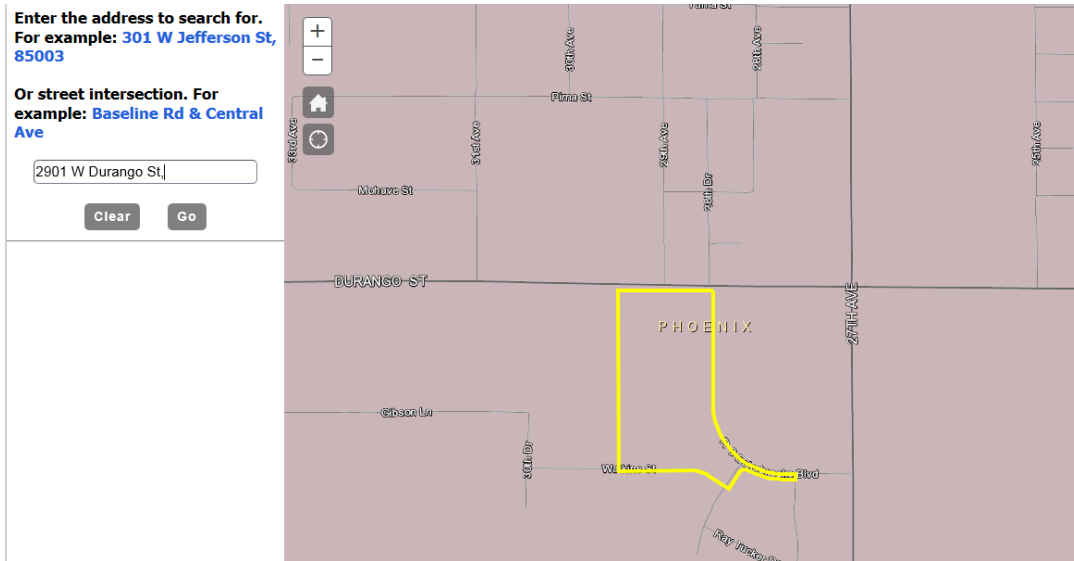


When selected, the Help icon will open and display this MCDOT Road Closures and Restrictions Map Help file.

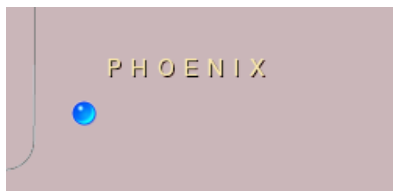
## Location Menu

The Location menu will assist you in locating properties by address, owner, or parcel number as well as finding the locations of intersections, GPS coordinates or Township and Ranges. The result of your search will be marked by a point or by lines. These temporary graphics can be removed using the Clear Search Graphics option. To return to the Location menu after conducting a search, click on the Back button. You may also remove the Location menu the same way that the Tools menu is removed, by clicking on the Red X.

The following screenshot illustrates a search by Address.



Clicking on the GPS option will pinpoint your current location on the map as displayed below.



The Property Owner option allows you to search by name. In the following example I entered Barbara as the first name and Taylor as the last name. Since I want to locate the Barbara in Gilbert, I select this option from the Results list. As shown below, the address will be located and the property will be outlined in yellow.



Select the APN option if you want to locate a property based on the assessor's parcel number. Enter the APN as shown in the following sample, and then click on the Go button.

Back APN

Enter the Assessor Parcel Number (APN) to search for. For example: **11219038A**

Clear Go

If you wish to search by Township/Range/Section, enter the information as illustrated below:

Back TRS

Township: T01N

Range: R03E

Section: 8

Go